

CAMremote-2/2A

Users Manual

Applies to:
Configuration Software Ver. 2.5.*
PCB Revision 2.0 and up

© 2010 VP-Systems

Revision history:

Revision	Date	Summary of changes
2.0	18-Mar-2008	First release
2.1	17-Mar-2010	Updated according to CR-2 and CR-2A

Overview

The CAMremote-2/2A (CR) is a highly integrated device which is designed for many kinds of remote video and photography. The main features of the CR are:

- Triggers the shutter of the camera using the following methods:
 - USB remote control using Picture Transfer Protocol if available (USB/PTP) - **CR-2 PRO only**
 - USB remote control using Ricoh CA1 protocol (USB/CA1)
 - Remote control using Canon/Nikon/Pentax/Panasonic 3-pin remote port (REMOTE PORT/E3) - **CR-2 PRO only**
 - USB remote control if [CHDK](#) firmware add-on is installed on Canon cameras (USB/CHDK)*
 - Infrared remote (IR) control
 - Servo motor "finger" which presses down the shutter button of the camera (SERVO-FINGER)
- Triggers video shooting using USB/PTP or USB/CHDK method
- Controls the zoom function of the camera using USB/PTP, USB/CHDK, IR or servo motor method
- Controls camera parameters like shutter speed, exposure, focus, etc. using USB/PTP or USB/CHDK method
- Controls the camera's lens open/close and sleep mode control using USB/PTP or USB/CHDK method
- Controls Tilt (vertical) and Pan (horizontal) servo motor control for automatic photography
- Rotating angles of servo rotors are fully configurable
- Programmable intervalometer for automatic photography
- Video overlay (On-Screen Display) for monitoring battery voltage etc parameters - **CR-2 PRO-OSD only**
- Battery monitoring and undervoltage protection for Lithium accus - **CR-2 only**
- Ability to connect a 1-3 channel R/C receiver or any external switch or electronic device to control the CR
- 7 PC configurable profiles for different settings or different cameras selectable in the field
- Four on-board LED's to indicate active profile or status of the device
- Camera settings easily set in the field for use with CR
- Multiple camera triggering when CRs are connected together (for example stereo photography)
- Compatible with DuneCam systems, adds control over shutter/zoom/settings features using USB/PTP or USB/CHDK method
- Upgradeable firmware via USB for product improvements
- Wide supply voltage range from 3V to 12V
- Very low power consumption 1 – 15mA depending on configuration
- Ultra light and extremely compact size
- Product continually improving as a result of the feedback and suggestions of users

* CHDK firmware enhancement is a 3rd party solution and VP-Systems is not taking any responsibility of using it and cannot guarantee its 100% functionality.

Note that several features listed above are available only when your camera supports one of the following remote control methods: USB/PTP, IR or USB/CHDK. Check the **Compatibility** chapter for more information.

The CR is configurable and upgradeable using PC with Microsoft Windows operation systems (98, 2k, XP, Vista).

Getting Started

This chapter gives brief instructions how to set up the CR with an R/C receiver or servo motors. Not all possible scenarios are covered here. It is highly recommended that the user read the entire manual prior to using the CR.

Begin with step 6 once the CR has been configured by you or the vendor.

1. Connect the USB cable to CR and to the USB port of your PC
2. Run the configuration software **camremote.exe** (file name may contain the version number)
3. Configure profile Set #1 (or additional profiles) according to your camera(s) and save
4. Remove CR from the USB port of the PC
5. Connect the USB cable to CR and to the USB port of your camera if you are going to use USB. If the SERVO-FINGER method is used, connect the servo cable to CH2. Attach IR cable if IR control is going to be used.
6. *Manual control:* Connect cables from R/C receiver to CH0, CH1 and CH2
Automatic control: Connect the pan servo cable to CH0, the tilt servo cable to CH1 and the power supply (battery) to CH2 or Battery Terminal PWR
7. Turn on your camera (**use playback mode** if USB/PTP method is selected and be sure camera is configured to PTP mode)
8. Wait until green LED lit constantly
9. The CR is now set up and ready to use

Compatibility

The CR is able to release the shutter with the SERVO-FINGER method on any camera but if the camera has a built in remote function then there are additional options available for remote control. Currently, the CR is able to handle several USB/PTP, USB/CHDK, USB/CA1, PORT/E3 and IR supported cameras.

Note USB/PTP and PORT/E3 are supported only in PRO and PRO-OSD versions.

USB/PTP (Only PRO version)

Controllable features of USB/PTP supported cameras are listed in following table:

Camera	Shoot	Zoom	Parameters	Extras	Note
Canon PowerShot A-series: A510, A520, A640 A60, A70, A75, A85, A95	Ok	Ok	Tv, Av, F, SQ	L, S	
Canon PowerShot A310	Ok	NA	TBD	S	
Canon PowerShot G-series: G5, G6, G7, G9 ¹ , G10 ¹	Ok	Ok	Tv, Av, F, SQ	L, S	¹ RAW mode is unavailable
Canon PowerShot S-series: S50*, S60, S70, S80, S410*, S500* S1 IS*, S2 IS*, S3 IS* SX100*, SX110*	Ok	Ok	Tv, Av, F, SQ	L, S	
Canon IXUS series: S110 (Digital IXUS v)* S200 (Digital IXUS v2)* S230 (Digital IXUS v3)* S300 (Digital IXUS 300)* S330 (Digital IXUS 330)* S400 (Digital IXUS 400)* S410 (Digital IXUS 430)* S500 (Digital IXUS 500)* SD100 (Digital IXUS II)* SD110 (Digital IXUS IIs)*	TBD	TBD	TBD	TBD	
Canon dSLR's: 300D, 350D, 400D, 450D, 500D*, 1D*, 5Dmk2, 7D*, 30D*, 40D*, 50D*, 1000D*	Ok	Zoom Servo on CH3 ³	Tv, Av, F ² , SQ*, ISO*, WB*		² Manual focus drive is available ³ CH3 is available only on CR-2A version
Nikon Coolpix-series: L4, L5-L18, P6000	OK	TBD			
Nikon dSLR's: D40, D60, all others	OK	NA			Tv, Av, SQ, S to be supported

* Not tested yet, may work but probably need improved firmware of the CAMremote

Descriptions: (Tv – Shutter speed, Av – Aperture, F – Focus unlock / lock, SQ – Size and quality, L – Lens open/close control, S – Sleep mode, WB – White balance, NA – Not available, TBD – To be defined)

The following cameras have remote control disabled and don't work with CR in USB/PTP mode:

- Canon PowerShot A-series: A410, A420, A430, A450, A460, A530, A540, A550, A560, A570 IS, A610, A630, A650 IS, A700, A710 IS, A720 IS
- Canon PowerShot S-series: S100, SD10, SD20, SD30, SD40, SD200, SD300, SD400, SD430, SD450, SD500, SD550, SD600, SD630, SD700 IS, SD750, SD800 IS, SD850 IS, SD870 IS, SD900, SD950 IS, SD1000

Check the full list from Canon web page, table [PowerShot Features Supported by Compatible SDKs](#).

Note that Canon cameras have remote control limitations in USB/PTP mode and several camera features are not available. For example startup time is slower compared to normal camera startup, there are longer pauses between shots (more than 3 sec), there is a longer latency time between shutter release command and shoot, there are no on-screen display texts/icons on LCD/Video-out (Powershots only), no short post-view after shot (Powershots only), no manual focus (Powershots only, partial workaround is available for focus).

USB/CHDK

The CHDK firmware add-on is a third-party software developed for Canon PowerShot cameras. Remote controllable features are determined by CHDK firmware and user scripts but not by the CR. The CR sends commands to camera via USB but CHDK scripts instruct the camera to perform the operations. The following Canon cameras have remote control support added to CHDK firmware and work in USB/CHDK remote mode:

- Canon PowerShot A-Series: A450, A460, A470, A530, A540, A550, A560, A570IS, A590IS, A610, A620, A630, A640, A650IS, A700, A710IS, A720IS, A2000IS
- Canon PowerShot G-Series: G7, G9, G11
- Canon PowerShot S-Series: S2IS, S3IS, S80, S5IS, SX100IS, SX110IS, SX10IS, SX20IS, SX200IS
- Canon IXUS Series: SD30, SD300 (IXUS40), SD400 (IXUS50), SD450 (IXUS55), SD500 (IXUS700), SD550 (IXUS750), SD600 (IXUS60), SD630 (IXUS65), SD700 (IXUS800IS), SD750 (IXUS75), SD800IS (IXUS850IS), SD850IS (IXUS950IS), SD900 (IXUS900Ti), SD1000 (IXUS70), SD770IS (IXUS85IS), SD790IS (IXUS90IS), SD870IS (IXUS860IS), SD890IS (IXUS970IS), SD950IS (IXUS960IS), SD1100IS (IXUS80IS) SD780IS (IXUS100IS), SD880IS (IXUS870IS), SD970IS (IXUS990IS), SD980IS (IXUS200IS), SD990IS (IXUS980IS)

Visit [CHDK remote control web page](#) to get latest information about supported cameras.

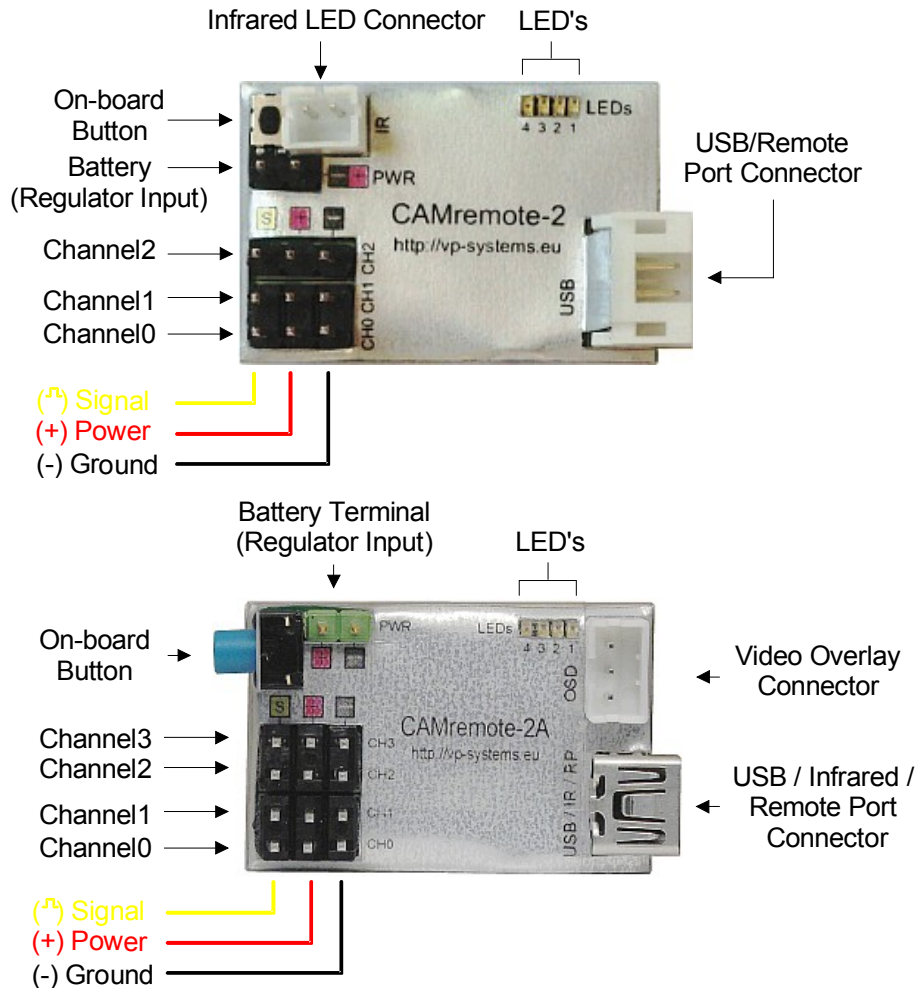
USB/CA1

The USB/CA1 protocol is developed by Ricoh and works with Ricoh GX100 and GX200 cameras only. CA1 protocol offers 3 features: wakeup/power-down, focus and release shutter of the camera.

REMOTE PORT/E3 (Only PRO version)

The 3-pin remote control port is available on most of the Canon, Nikon and Pentax dSLR-type cameras and has 2 controllable aspects: focus and release shutter of the camera. There is a fast continuous shooting mode available as well.

CAMremote-2/2A Boards



Power Supply

The CR can take its power from an R/C receiver connected to any of CR's channels (CH0-CH2, CH3*) or can be powered from any power source through Battery terminal/Regulator Input (PWR) or power supply pins of any channels. Note servos can accept usually 4.8...7.2V **otherwise the servo(s) will be damaged!** Feed your power source to power pins of the any channels if voltage is less than 5..7V (depends of specification of your servos) otherwise connect them to Battery Terminal. The CR has onboard 5V regulator on Battery Terminal which regulates input voltage to 5V. Supply voltage pins are (+) and (-) on any channels (CH0-CH2, CH3*) and Battery Terminal (PWR). So, if you connect power source to Battery Terminal then there is no need to connect power source to power pins of any channel because there will be regulated voltage 5V (or less depends of level of power source).

* CAMremote-2A only

Onboard LED's

The CR has 4 Light Emitting Diodes (LED's) on board where LED's #1...#3 are red (or yellow) and #4 is green. The LED's show the state of the CR (green LED blinks quickly) when it performs operations. During photography session when green LED is on, red LED's show code of active configuration profile. At startup the CR goes to profile changing mode and LEDs of active configuration are blinking several

seconds. Indication codes of the configurations are shown in each configuration tab on software window (see more info from chapter **Configuration Software**).

Channels

The CR has 3 or 4* bidirectional channels (CH0 – CH2, CH3*) which receive signals from an R/C receiver (or any other electronics device including mechanical switches) in order to control the functionality of CR. In automatic mode (Intervalometer or Panorama modes) the CR drives servo motors which can be connected to CH0 and CH1. Channel CH2/CH3* is used for servo “finger” if needed (custom functionality is also possible upon request).

* CAMremote-2A only

A USB Connector

USB Connector is used to connect CR to camera or to PC. Only the red LED #1 is lit (not blinking) when CR is connected to a PC. Note USB connector is shared with IR connector on CAMremote-2A.

Alternative function of USB Connector is to control the REMOTE PORT/E3 using a special cable.

Infrared LED Connector

Connect the infrared LED cable plug to this connector and mount the infrared LED close to the camera's IR sensor. If tiny IR plug is used, attach CAMremote-2 board onto camera so that IR LED points to camera's IR sensor. Use tape or Velcro to attach it. Note IR connector is shared with USB connector on CAMremote-2A.

On-board Button

An on-board button is used to select the desired profile. A short click of the button switches the CR to profile selection mode and the onboard LED's start to blink to display the current profile identification. Pressing the button again selects the next profile and the blinking LED's display the next profile identification. If the button is not pressed for 3-4 seconds, the currently displayed profile will be selected.

Holding the button down for at least 4 seconds instructs the CR to command the camera to release the shutter. This is useful to test the readiness of the camera for a photographic session. Note that CR is able to send this command to camera only when the green LED is lit and the camera is turned on.

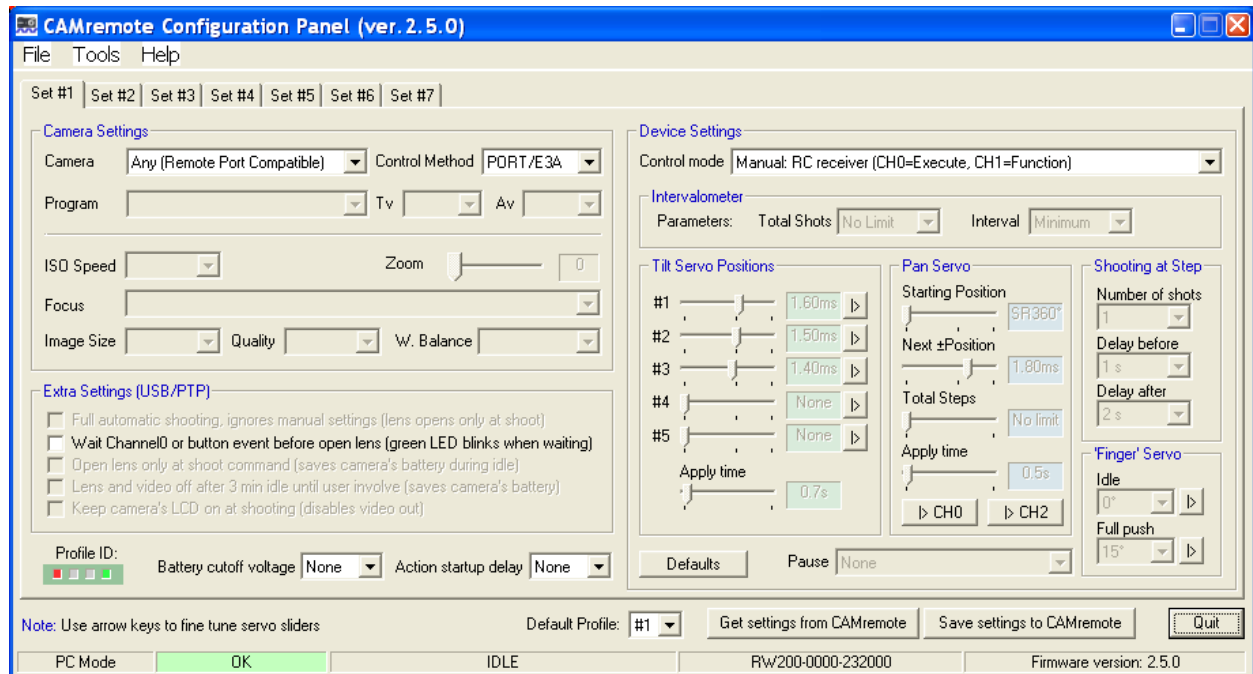
If the button is held down at power on, CR goes into bootloader mode (all LED's blink 8 times). The bootloader mode is useful for recovery if a firmware upgrade has failed and CR is not able to communicate with the PC.

Functions of the on-board button

Short click	Profile selection mode, on-board LED's start to blink showing current profile identification
After short click, press the button until the LED's show the desired profile	Select next profile
3-4 sec click and hold	Shutter release
Hold down at the power on moment	Bootloader mode, LED's blink 8 times

Configuration Software

The CR is programmable using PC with special configuration software. The software runs on Microsoft Windows operating systems (2000, XP, Vista) and CR requires one free USB port. No driver installation is required. The “New Hardware Found” message appears on the screen when CR is first connected to the PC and the operating system automatically installs a suitable driver. Once installed, the configuration software may be run. A screenshot of the software is shown in the following picture.



When the software starts up, it automatically attempts to read configuration data from CR and displays any retrieved items on screen.

The communication status bar is on the bottom of the window. If communication between CR and PC has been successful it displays an “OK” message on a green background, otherwise it displays “CAMremote I/O error” on a red background. Messages, serial number and firmware version fields are next items on status bar.

Seven user configurable profiles are available. Click on tabs **Set#1...Set#7** to open a specific profile for configuration. Every profile includes a graphical representation of CR's on-board LEDs. When CR's on-board LED's are lit in the same configuration the specific profile is selected and active. Note that this profile identification is displayed only when the green LED is lit, otherwise CR may show other operational information on the LED's.

The button **Get settings from CAMremote** reads the configuration data from CR. Click on it if CR is connected to the PC after the software has been started. The button **Save settings to CAMremote** stores all configuration data to CR. Click on it when all profile configurations are completed. This will store all profiles in CR. The CR may now be removed from the PC.

When configuration is completed, the profile settings can be exported to Notepad for printing by clicking on **Profiles to Notepad** from **File** menu. Printed copy would be like a reminder when choosing profiles in the field.

Firmware Upgrade

The firmware of the CR is upgradeable by the user. The configuration software checks the firmware version of CR when the software starts or by pressing the **Get settings from CAMremote** button. The software will suggest that the user upgrade the firmware if it is an older version. Press **Yes** button to perform an upgrade. You can perform a firmware upgrade (or downgrade) manually by selecting **Update Firmware** from **Tools** menu.

Camera Settings

Settings for **ISO Speed, Zoom, Image Size, Quality** and **White Balance** are beyond the scope of this document. They may be found in the camera's User Manual.

The CR software will enable/disable various settings according to selected items. This will help the user to understand which features are available or unavailable in specific modes.

Camera

Choose the exact model of your camera from the list because configuration parameters will vary according to the selected camera. If the camera is not listed, choose the closest model. When use of a camera with CHDK firmware add-on is desired, select from the list **Any (CHDK Compatible)**. When use of a simple servo-triggered camera choose **Any (Uses servo control only)**. Use **Any (Remote Port Compatible)** if camera with Remote Port are used.

Control Method

Choose a suitable control mode depending on the method you would like CR to interface with your camera: using **USB/PTP, IR, USB/CHDK, USB/CHDK+, USB/CA1, PORT/E3, PORT/E3A** or **Servo**. This list will vary according to the selected camera model. Note: when USB/PTP mode is selected CR attempts to communicate with camera before it will be ready for shooting. The red LED #1 blinks at every 3sec intervals until CR is not able to negotiate with camera. Other modes are ready for shooting immediately after power on because there is no negotiation phase with camera.

The CR generates pulses on USB when performing commands with USB/CHDK or USB/CHDK+ method. Commands and pulse widths are shown in following table. Use them in your CHDK scripts to detect a right command and instruct the camera to perform the operation.

Command	Pulse width (USB/CHDK Method)	Pulse width (USB/CHDK+ Method)
Shoot	10 ms	15 ms
Focus	65 ms	35 ms
Focus release	125 ms	55 ms
Zoom In	185 ms	75 ms
Zoom Out	255 ms	95 ms
Record video	325 ms	115 ms
Aperture increase (Av+)	385 ms	135 ms
Aperture decrease (Av-)	445 ms	155 ms
Shutter speed increase (Tv+)	505 ms	175 ms
Shutter speed decrease (Tv-)	565 ms	195 ms
Stop video record	625 ms	215 ms
Close lens	685 ms	415 ms
Power Off	745 ms	500 ms

Program (USB/PTP only) (Only PRO version)

Choose a suitable program from list. Setting options, including **Auto, Aperture priority, Shutter priority** are not described here but may be found in the camera's User Manual.

The selection **'M' settings (Set on field)** uses the camera's last settings which were manually set when the camera dial was on the 'M' position. This allows the photographer to set the camera settings manually before starting a new photography session with CR. Note that some cameras have C1 and C2 settings but those are not accessible in USB/PTP mode and will be ignored.

The selection **CAMremote settings** allows the CR to use settings (**Tv, Av, ISO, Quality/Size, White Balance**) set by the configuration software. Note when **CAMremote settings** is selected it will overwrite the camera's last manual settings during photography session.

Focus (USB/PTP only) (Only PRO version)

Manual focus is not available in USB/PTP mode. A workaround is to point the camera toward an object, command CR to perform focusing, and then lock the focus. Note that focusing always takes time before shooting so try to keep the need for focusing minimal if fast shooting is important. Choose a suitable focusing method from the list according to your requirements. Re-focusing can be controlled manually by the user during photography session when choosing **Re-focus/lock controllable by Channel0**. Read more info from chapter **Device Settings**.

Extra Settings (USB/PTP only) (Only PRO version)

Full automatic shooting, ignores manual settings (lens opens at shoot) – This setting uses camera feature to open lens and shoot picture using automatic shutter speed and aperture parameters and ignoring all user settings. This is same command Windows sends to camera when user clicks on **Take a new picture** link on the Camera Task window (XP, Vista only). After shooting the camera closes the lens.

Wait Channel0 or button event before open lens (green LED blinks when waiting) – This setting waits for an external signal to be applied to Channel0 or waits for a button click before CR opens the lens. This is useful when CR and the camera are powered up but there is need to protect the camera lens during the setup of the photographing system (pole, helicopter/plane/kite lift-off etc).

Open lens only at shoot command (saves camera's battery during idle) – This setting opens the lens only when shoot command is detected. The CR applies all settings to the camera which are defined in the **Camera Settings** frame of the configuration software. Note: it requires a few seconds before the camera opens the lens, starts up and is able to shoot a photo. This is useful when using long time photography like astronomy, observing plant growth etc. After shooting the Camera closes the lens and thus the camera goes into low power mode.

Lens and video off after 3 min idle until user involve (saves camera's battery) – This setting enables the power save feature of the camera where after 3 minute idle time (no activity on input channels, button or intervalometer) the camera closes the lens and goes into low power mode. Any interruption from channels, button or intervalometer will wake the camera up. Note: it requires a few seconds before the camera opens the lens, starts up and is able to shoot photos.

Keep camera's LCD on at shooting (disables video out) – This setting turns the LCD on and disables the video signal on the video terminal. This is useful when testing the CR on the bench.

Device Settings

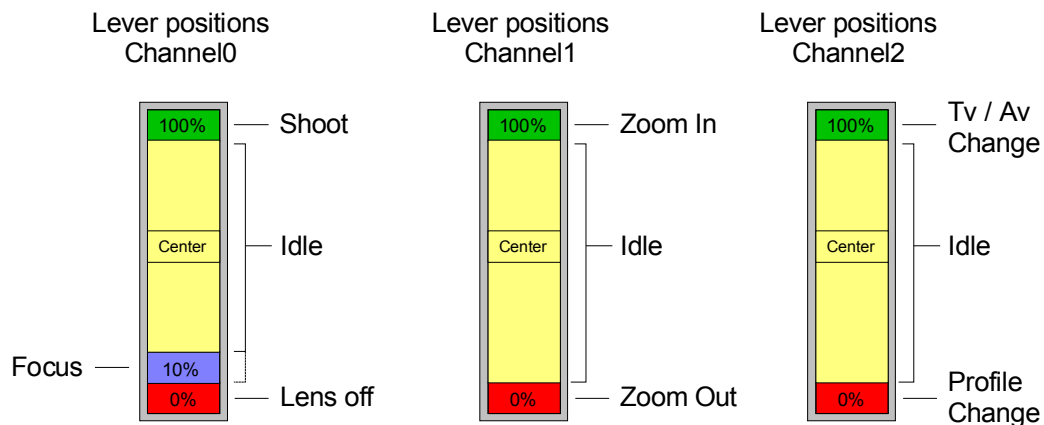
Device settings let the user choose the operating mode of the CR and configure several servo motor related parameters.

Note that power off, zoom, focus, lens control and Tv/Av (shutter speed/aperture) control are available only if your camera supports USB/PTP mode. For CHDK-compatible cameras, special CHDK scripts may be used to control a variety of camera settings and features. More info about CHDK scripts will be available on the CR web page.

Control Mode

Control Mode setting is used to set how CR is controllable: externally (Manual) by user (or any electronic device) or internally (Automatic) by CR program. Channels CH0-CH2 of the CR are inputs when selected value is **Manual** and CR is waiting commands via Channels. If selected value is **Auto** then channels of the CR are outputs in most cases (are able to drive servos). There are several options how CR can be controlled. More info about these options are listed below. Note not all options which are in list of configuration software are not described here, several of them are under development.

Manual: RC receiver (CH0=Shoot, CH1=Zoom, CH2=Alt) – This setting configures Channel0-2 (CH0-CH2) to inputs and shoot, zoom and Tv/Av parameters are externally controllable by RC receiver. Channels are sensible to pulse width coding signal. Most RC transmitters/receivers are generating pulse width from 1 milliseconds (0%) to 2 milliseconds (100%) according to position of lever on control panel of transmitter. Descriptions of lever positions and how CR interprets them are shown in following picture.



CH2 is used to define functionality of CH0 and CH1. When CH2 is on idle position or left connected then CH0 can be used to trigger the shutter, re-focus (optional, depending on *Focus* setting) and lens on/off control and CH1 can be used to control the zoom of the camera. Move lever to 100% to shoot the photo. Keep it on that position to repeat a shooting. Move it to center position to stop shooting. Camera closes the lens if lever is set to minimum position (0%) and wakes up when moved away from minimum position. Useful before completing the session to keep camera in safe condition (during descent of the helicopter/kite/pole/blimp etc).

When CH2 is at maximum position (100%) then CH0 can be used to change shutter speed value and CH1 can be used to change aperture value. Value increases by one step if lever is set to max position and decreases when position is set to min. Center position is idle.

When CH2 is at minimum position (0%) then CH0 can be used to change configuration profile. Move CH0 lever to 0% and back to idle position to change profile to previous one. Move CH0 lever to 100% and back to idle position to change profile to next one. Note: only same type of Control Mode profiles are available, others are ignored. Use on-board button to change any profile.

Manual: RC receiver (CH0=Execute, CH1=Function) – This setting configures Channel0-1 (CH0-CH1) to inputs and CR functionality is manually controllable by general RC transmitter/receiver. Channels are sensible to pulse width coding signal. Most RC transmitters/receivers are generating pulse width from 1 milliseconds (0%) to 2 milliseconds (100%) according to position of lever/potentiometer on control panel of transmitter. Channel0 is used to execute function which is selected by Channel1. Use lever control for CH0 (Execute) and potentiometer control for CH1 (function selection). Descriptions of transmitter controls positions and how CR interprets them are shown in following table.

Channel1 Position	Channel0 Position				
	0..20%	21..39%	40..60%	61..80%	81..100%
Not used	-	Focus release	Idle	Auto focus	Shoot
0..10%	-	Focus release	Idle	Auto focus	Shoot
11..20%	Manual focus drive down (2x step)	Manual focus drive down (1x step)	Idle	Manual focus drive up (1x step)	Manual focus drive up (2x step)
21..30%	Zoom out		Idle	Zoom in	
31..40%	Tv-	Tv-	Idle	Tv+	Tv+
41..50%	Av-	Av-	Idle	Av+	Av+
51..60%	-	-	Idle	-	-
61..70%	-	-	Idle	-	-
71..80%	Stop video recording		Idle	Start video recording	

Note: User can test transmitter/receiver setup and see how CR interprets transmitter controls by PC. Connect CR to USB port of the PC and connect control channels from radio receiver to CH0 and CH1 of the CR. Run configuration software, choose from **Device Settings** frame -> **Control Mode: Manual: RC receiver (CH0=Execute, CH1=Function)** and save settings by clicking on **Save Settings to CAMremote** button. Messages (similar to table above) will appear to status bar (bottom line, third field) which shows interpretation result of CH0 and CH1 signals. Change lever/potentiometer on transmitter and follow messages on screen. Attach sticky paper close to lever and potentiometer and mark positions and respective functions to it.

Manual: Rising edge sense (CH0=Shoot, CH1=Zoom+, CH2=Zoom-) – This setting configures CH0-CH2 to inputs where shoot (CH0), zoom-in (CH1) and zoom-out (CH2) are externally controllable by rising edge of the signal. Signal source can be whatever electronic device like microcontroller, motion detector or simple switch (or button) which provides voltage to input pin(s). Simplest way to generate rising edge signal is to short **Signal** and **(+)** pins for a moment.

Manual: By DuneCam (shutter/zoom/settings via CH0) – This setting configures CH0 to input and shoot, zoom, lens open/close and Tv/Av settings are externally controllable by DuneCam or any other programmable electronic system. CH0 is sensible to pulse width coding signal. Pulse width and its related commands are shown in following table.

Pulse Width (in microseconds)	Command
2000	Shoot
1900	Lens Close / Sleep
1800	Re-focus / Lock focus
1700	Zoom-In
1600	Zoom-Out
1500	Next Profile
1400	Previous Profile
1300	Shutter speed increase (Tv+)
1200	Shutter speed decrease (Tv-)
1100	Aperture increase (Av+)
1000	Aperture decrease (Av-)

Use scripts to perform Lens close/open, Zoom, Tv/Av and Profile change. Use Shoot command to wake up the camera if it was commanded to sleep.

Manual: RC4 at CH0 (A=ZoomOut, B=ZoomIn, C=Shoot, D=Pause) – This setting configures CH0 to input mode and shoot, zoom, pause settings are manually controllable by keyfob-sized radio transmitter/receiver devices. Meaning of buttons A-D on transmitter can be customized upon request.

Manual: 4/8 Button Radio (CH0=Radio, CH1=Tilt, CH2=Pan) – This setting configures CH0 to accept commands from radio module and manually control tilt and pan servos. Tilt servo is connected to CH1, and a pan servo is connected to CH2. Functional descriptions of 4- and 8-button transmitters and how CR interprets them are shown in following table.

Buttons	Function
4-Button Transmitter	
1	Shoot
2	Drive tilt servo up
3	Drive tilt servo down
4	Combined function with other button
4+1	Close lens
4+2	Drive pan servo right
4+3	Drive pan servo left
8-Button Transmitter	
1	Drive tilt servo up
2	Drive tilt servo down
3	Drive pan servo right
4	Drive pan servo left
5	Zoom in + (roll or zoom) servo up on IR/CH3 channel*
6	Zoom out + (roll or zoom) servo down on IR/CH3 channel*
7	Shoot
8	Combined or Alternate function: Hold down 6 sec to change profile and then choose new profile by pressing on profile number 1-7
8+1	Tv+
8+2	Tv-
8+3	Av+
8+4	Av-
8+5	Power off
8+6	Close lens
8+7	Start/stop video recording



* Zoom can be controlled electronically through USB if camera support it and can be controlled also by external servo motor through IR port (CR2) or CH3 (CR2A) as well. IR/CH3 channels can drive roll servo instead of zoom if zoom is not planned to use.

Tilt and Roll/Zoom servo parameters can be defined in **Tilt Servo Position** frame. Value **#1** defines initial position of the servo and value **#2** defines step size of the movement. Value **Apply Time** is used to define driving time (continuous or limited time only). For example if **#1** is 0° and **#2** is 10° then servo makes ±10° step at every tilt/zoom/roll command (direction is depending of **#2** sign). If values **#1** and **#2** are **None** then CR is using internal predefined values. User can test these values on real servos by pressing **|>** button. Servo must be connected to CH1.

Pan servo parameters can be defined in **Pan Servo** frame. Value **Starting Position** defines initial position of the servo and value **Next ±Position** defines step size of the movement. Value **Apply Time** is used to define driving time (continuous or limited time only). You can test these values on real servos by pressing **|> CH0** or **|> CH2** buttons (depends where servo is connected).

Manual: Switch (CH0=Shoot, CH1=Focus+, CH2=Focus-, CH3=Record) – This setting is dedicated mostly for DSLR cameras where shooting, manual focus drive and video record/stop can be controlled by connecting (S) terminal to (-) terminal of CH0-CH3 respectively.

Auto: Intervalometer – This setting sets CR to an automatic shooting mode where the shooting interval and count are user selectable. Choose the maximum number of shots desired from the **Total Shots** list and the desired time interval between shots from the **Interval** list. Note: the shooting operation requires a few seconds to complete which causes an additional delay to the interval. Select the value **Minimum** from the **Interval** list if the fastest possible shooting is required. The camera closes the lens and goes into sleep mode when the shooting counter reaches the maximum value selected from the **Total Shots** list (USB/PTP mode only). Hold down the onboard button for 3-4 sec to restart the shooting sequence.

Auto: HoVer ('V'-pattern motion, CH0=Pan, CH1=Tilt) – This setting sets CR to an automatic shooting mode with programmable pan and tilt positions. A normal or 360° modified pan servo is connected to CH0, and a tilt servo is connected to CH1. Depending on the camera being used, the user can choose to trigger the camera using USB, IR, or a finger-servo. The pan and tilt positions are programmable via the **Tilt Servo Positions** and **Pan Servo** items. The CR uses the following sequence when controlling the servos: tilt to position #1, position #2, position #3, position #4, position #5, then pan using user-selected **Next ±Position** and **Apply Time** values. CR then repeats the sequence until reaching number of **Total Steps** value. After reaching this value the CR drives servo to **Starting Position** (if this value is other than SR360° which means 360° modified servo is used) and starts panning sequence at the beginning. At every tilt position, the camera shoots the number of photos chosen in the **Number of Shots** list. The CR completes shooting when number of **Total Shots** (in **Intervalometer** frame) is reached. To prevent camera shake due to servo movements, select suitable time values from the lists **Delay Before** and **Delay After**. If **IR** is selected from the **Control Method** in **Camera Settings** frame, use suitable **Delay After** value to allow camera to complete the shoot command before next step (usually 3-7 sec depends on shutter speed and image size). Please read more from **Recommended pan and tilt settings** below.

Auto/Manual: HoVer ('V'-pattern motion, CH0=Radio, CH1=Tilt, CH2=Pan) – This setting is same as **Auto: HoVer** mode but start/stop can be manually controlled by 4- or 8-button transmitter. Radio module is connected to CH0, a normal or a 360° modified pan servo is connected to CH2, and a tilt servo is connected to CH1. Features of manual control are listed in table below.

Buttons	Function
4-Button Transmitter	
1	Start sequence
2	Pause sequence
3	Pause sequence and power off the camera
8-Button Transmitter	
1	Start sequence
2	Pause sequence
5	Pause sequence and power off the camera
6	Pause sequence and close lens of the camera
8	Alternate function: Hold down 6 sec to change profile and then choose new profile by pressing on profile number 1-7

Auto: Panorama (CH0=Pan) – This setting sets CR to automatic shooting mode where CH0 is driver for a horizontal (Pan) servo motor. The CH2 will be a servo-finger driver if **Servo** is selected from the **Control Method** in **Camera Settings** frame. The desired amount of pan servo rotation is user programmable via the **Pan Servo** list. After each servo rotation, the camera shoots the number of photos selected in the **Number of Shots** list. To prevent camera shake due to servo movements, select suitable time values from the lists **Delay Before** and **Delay After**. Either a 360° modified servo or a Parallax

(Futaba) Continuous Rotation servo should be used. If **IR** is selected from the **Control Method** in **Camera Settings** frame, use suitable **Delay After** value to allow camera to complete the shoot command before next step (usually 3-7 sec depends on shutter speed and image size).

Recommended pan and tilt settings

Use **Defaults** button to get predefined values of servo settings.

Tilt Servo Positions is used to select desired tilt. There are 5 positions available. Choose **None** if you want to skip any position(s). The listed values are in microseconds or degrees (selectable from menu: Tools->Servo Units). A value of approximately 1 ms will move the tilt servo to one extreme (either horizon or straight down) and a value of approximately 2 ms will move the servo to the other extreme. A value of 1.5 ms (0°) will move the servo to a center position. These values are rules of thumb, and most servos are able to rotate more than 180°, so you can experiment with larger or smaller values too. User can test these values on real servos by pressing **|>** button. Servo must be connected to CH1.

Pan Servo parameters are used to control a Pan servo position. Normal or a 360° modified servo or a Parallax (Futaba) Continuous Rotation servo should be used. When a 360° modified servo is used, set **Starting Position** value to **SR360°**. Use the **Next ±Position** parameter to set the direction of the rotation. Usually 1.5 ms (0°) is the center point but this may vary depending of the servo. The servo rotor turns left if the value selected is less than the center value and turns right if the value selected is greater than the center value. The servo makes a smaller rotation if the value selected is closer to center point. Use the **Apply Time** setting to determine how long the servo motor is driving its rotor (only 360°-modified servos). For example the servo rotates about 45° (depends of servo) if the **Next ±Position** is set to 1.4 ms (-9°) and the **Apply Time** is 400ms. User can test these values on real servos by pressing **|> CH0** or **|> CH2** buttons (depends where servo is connected).

Pan and Tilt servos will be driven continuously by CR if **Apply Time** value is **Always**. This is recommended setting if camera is too heavy and keeping of servo position fixed is impossible during idle time. Note continuous driving consumes more current from power source than short time driving.

You may need to experiment with different values to find a suitable combination. **Note: You have to power up any of the channel or PWR terminal from external power supply or battery in order to test servos.** First connect CR to USB port of the PC and after that power up the CR from any channel or PWR terminal.

Support

CAMremote is continually improving as a result of the feedback and suggestions of users. Ideas for improvements and requests for new feature are welcome and greatly appreciated. Bug reports will be investigated and corrected as soon as possible. To report a problem or request a new feature, please contact us by email at support@vp-systems.eu or through our web page <http://vp-systems.eu> -> Contact. Visit CAMremote's [support page](#) to get updated software and documentation.

Troubleshooting

If an error occurs, please consider the following instructions. If you are unable to solve the problem, please contact us by e-mail or through our web page. Please attach screencopy of your setup and detailed description which help us to replicate same condition. Please don't try to repair the device yourself or you will void the warranty.

Problem	Cause	Solution
All LED's are on after power on	CR didn't start correctly	Unplug CR from power supply or from USB port of the PC and plug again
All LED's blink 8 times after power on	Firmware of CR is corrupted	Update the firmware using configuration software
All LED's are off after power on	No power supply on CH0, CH1, CH2 or Battery Terminal.	Check wires of power supply and polarity of connector which is attached to CH0-CH2 or Battery Terminal

Specification

Board size: 31 x 21 mm (1.22" x 0.83")

Board weight: 3g (0.106 oz)

Board weight with USB and three servo cables: 18 g (0.635 oz)

Supply voltage on Battery Terminal: 3.7-12 V

Supply voltage on power pins of any channel: 3-16 V

Power consumption without servos: 1-15 mA

Channel connectors: 3-pin JR/Futaba style

Maximum input voltage on Signal pin of CH0-CH2: 10 V (survival)

Maximum input voltage on Signal pin of CH3: 5 V (survival)

Warranty 1 year.